



浙江铭明 Tel: 86-577-62870600 / E-mail: wangdewey80@yahoo.com [http:// www.chinameter.cc](http://www.chinameter.cc)

DDSF450 Single phase multifunction kwh meter



DDSF450(T), a type of fully electronic active energy electricity meter, conforms to IEC60521-21, IEC62052-11. The meter features its innovative structure design and reliable electric capabilities, so it is an ideal option for measuring household electric energy with time-of-use (TOU) as well as balancing electricity load better.

Specification

Type	Specification	Accuracy Class
DDSF450	220V 2.5(15)A	Class 1 or class2
	220V 5(30)A	Class 1 or class2
	220V 10(60)A	Class 1 or class2
	220V 20(100)A	Class 1 or class2

Technical data

1. Voltage range: Specified operating range: $0.85U_n \sim 1.1U_n$, Limit range of operation: $0.7U_n \sim 1.15U_n$
2. Rate frequency: 50Hz
3. Starting current: $0.004I_b$
4. Power consumption in voltage circuit: $\leq 2W$ or $2.5VA$ Power consumption in current circuit: $\leq 2.5VA$
5. Dimension(mm): $164.5 \times 112 \times 71$ (L×W×H)
6. Net Weight: 0.7kg
7. Clock accuracy: Daily timing error less than 0.5s(reference temperature)
8. Battery capacity: $\geq 1000mAh$
9. Date preservation time: ≥ 10 years
10. Temperature range: Specified operating range: $-25^\circ C \sim +55^\circ C$ Limit range of operation: $-40^\circ C \sim +70^\circ C$



Tel: 86-577-62870600 / E-mail: wangdewey80@yahoo.com [http:// www.chinameter.cc](http://www.chinameter.cc)

Main Functions

Meter constant:

(1) Active energy measuring

It can measure total energy and energy of every tariff. The reverse energy is measured and added to the corresponding forward energy. The energy measuring range is from 0 to 99999.999kWh.

(2) RTC

An external real time clock realizes the timing and TOU, including calendar program and day light saving time setting.

(3) TOU control

It can offer 4set schedules to realize multi-TOU control. The day can be maximally divided into 10 periods with 4tariffs for each schedule. Work-off days can be also programmed in a week.

(4) Energy Record

It can store energy in billing day of each month. The billing day can be set within 1 to 28 of one month. It may store history energy data for 12 months. All data may be accessed via personal computer(PC) or hand hold unit(HHU).

(5) Display

It can display by LCD indicator during both power supply and power failure. It supports automatically cyclic display mode and button pushing display mode. Display items can be set by user via PC or HHU. If power failure lasts 7 days continuously, display will be turned off and can be awaked by infrared controller or pushing button.

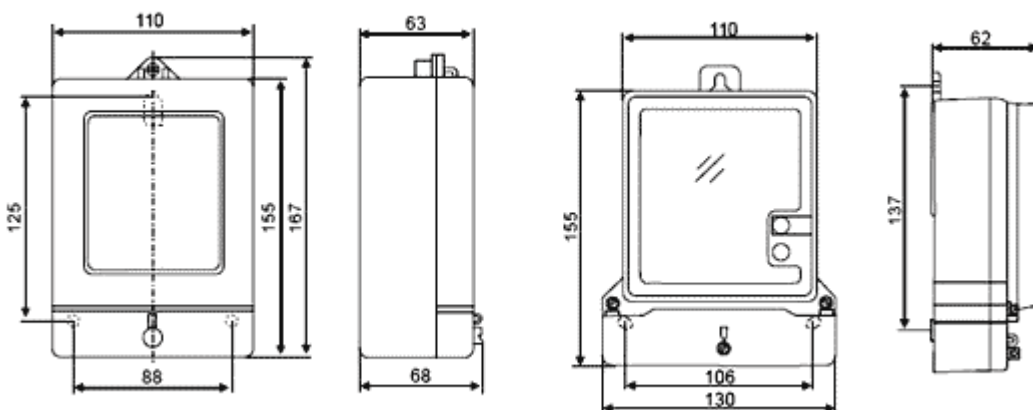
(6) Event Log

It can record last five times of case opening during normal operation and once of such event in case of power failure. The other events will be recorded including power down, programme setting and current reversing. The total happening times of each event plus their respective latest five starting times and ending times can all be accessed via PC or hand hold unit(HHU)

(7) Communication

It can communicate via infrared interface, which realizes the meter reading and parameter setting. There is a separate battery inside the meter for meter readings under power failure condition.

Outline & installation size

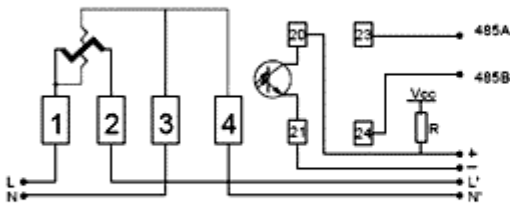




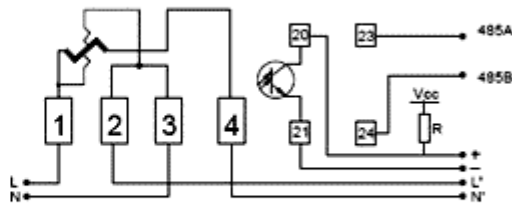
指ZHIMING® Tel: 86-577-62870600 / E-mail: wangdewey80@yahoo.com [http:// www.chinameter.cc](http://www.chinameter.cc)

Connection

Both symmetrical connection and sequential connection are available. Connection diagrams are as follows:



Sequential connection diagram



Symmetrical connection diagram

Transport and Storage

The meter shall be handled carefully to avoid severe shock during transport, It should be transported and stored according to the requirements specified in the national standard GB/T15464-1995 "General Technical Requirements for Packaging of Instruments and Apparatus".

The meter shall be stored on the shelves with its original package, the stacking height shall not more than five layers. Keep the storage place clean. The storage temperature shall be within 0~40 and the relative humidity is less than 85%.

There's no injurant in the atmosphere which result in corrosion. Identification No. of the meter.

The ID No. of the meter is the same as the number stated in the name plate.